

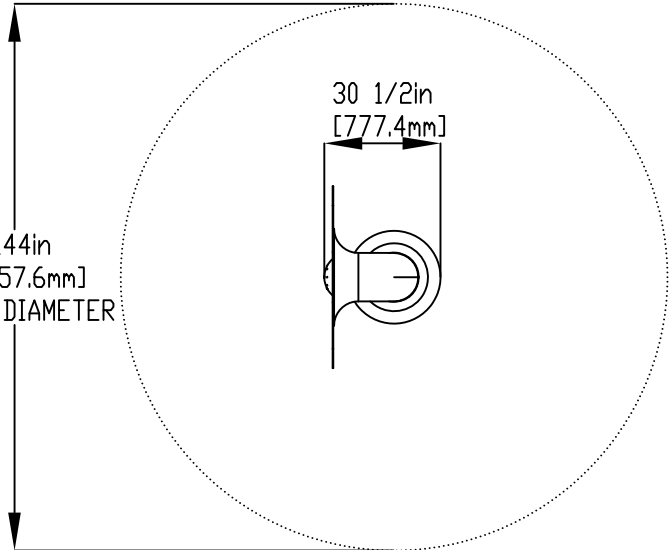
A

A

NOTES:

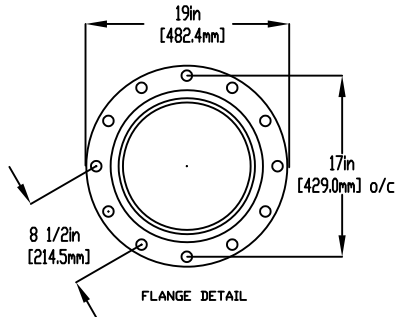
- (1) PURGE ALL WATER SUPPLY LINES TO REMOVE SOLIDS PRIOR TO TOY INSTALLATION.
- (2) PROVIDE ELECTRICAL BOND WITH POOL REBAR.
- (3) INSTALL ALL WATER TOYS PLUMB AND LEVEL.
- (4) PROVIDE STRAINER UPSTREAM OF TOY WITH MAX 1/32" (0.8mm) PERFORATIONS.

Ø144in
[3657.6mm]
SPRAY DIAMETER



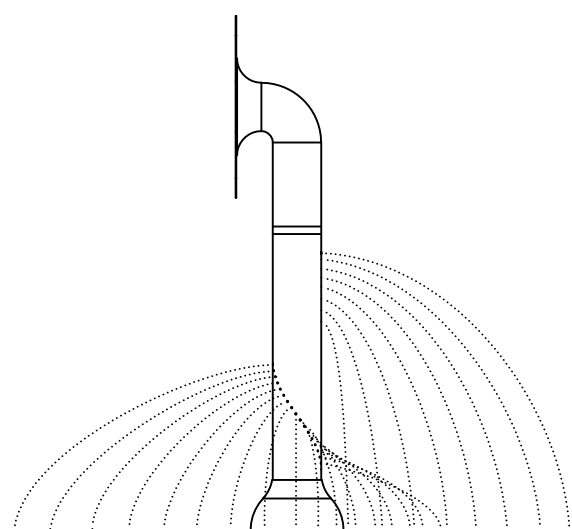
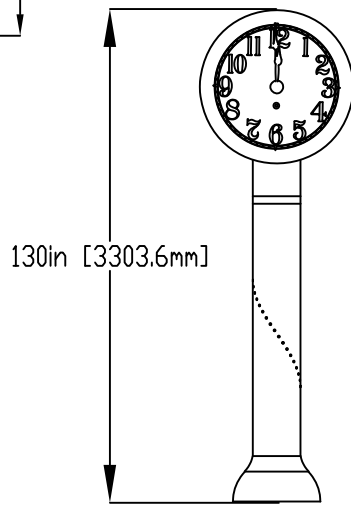
B

B



C

C



D

D

LOWER FLANGE COVER AFTER TOY IS INSTALLED.

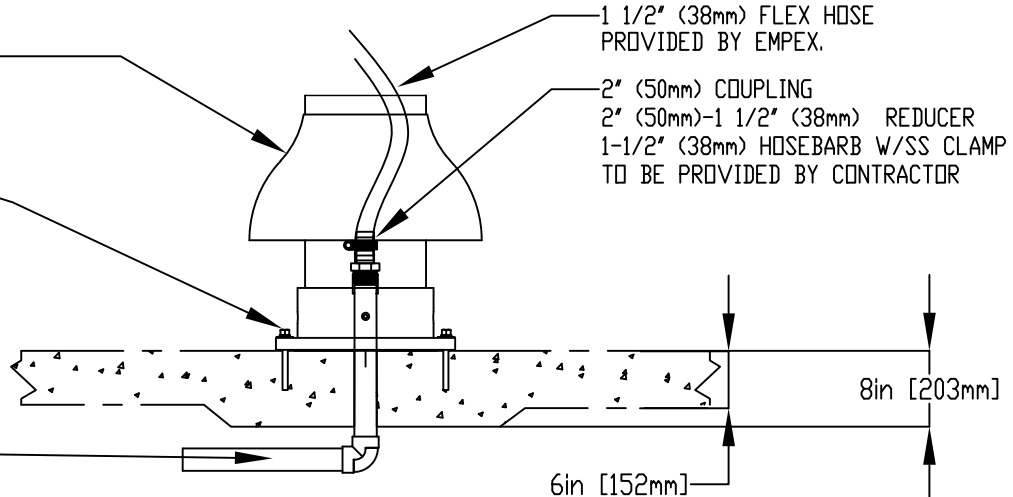
STAINLESS STEEL (316)
5/8" (16mm) THREADED ROD, WASHER,
LOCK WASHER, & NUT.
THREADED ROD LENGTH 9" (230mm)
WITH 6" (150mm) EMBEDMENT. USE
MINIMUM 6 ANCHORS TO BE PROVIDED
BY CONTRACTOR.

1 1/2" (38mm) FLEX HOSE
PROVIDED BY EMPEX.

2" (50mm) COUPLING
2" (50mm)-1 1/2" (38mm) REDUCER
1-1/2" (38mm) HOSEBARB W/SS CLAMP
TO BE PROVIDED BY CONTRACTOR

E

E



WATERFEED
2" (50mm) PVC SCH 40 PIPE
EXTENDED 6" (152mm) ABOVE SLAB

F

F



Notes: Overall dimensions of toys are approximate.

© EMPEX WATERTOYS

WATER SUPPLY

50 gpm @ 25 psi
3.15 L/S @17.5m

AQUATIME

T904

01/04/2020

SCALE:

Sheet
1 of 1