

1

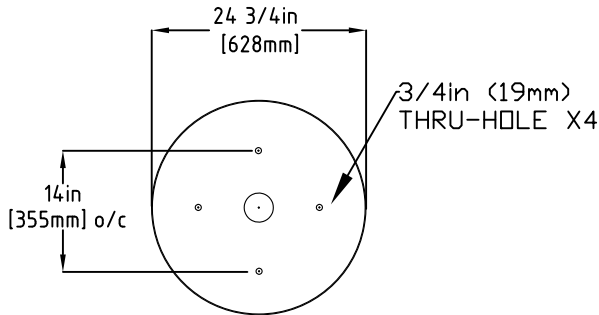
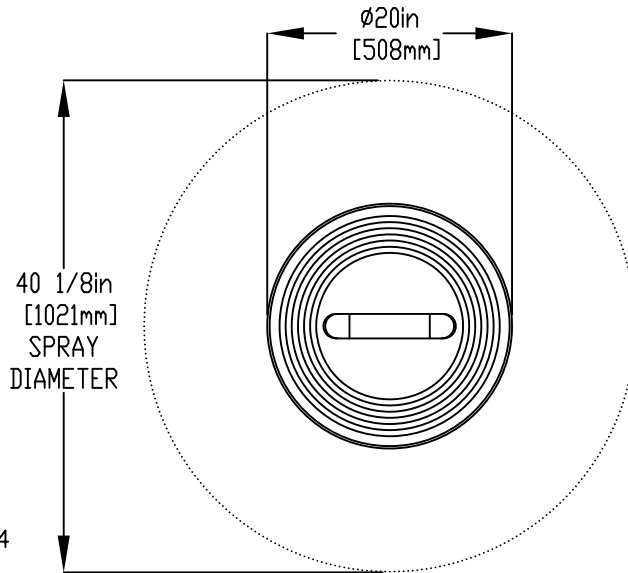
2

3

4

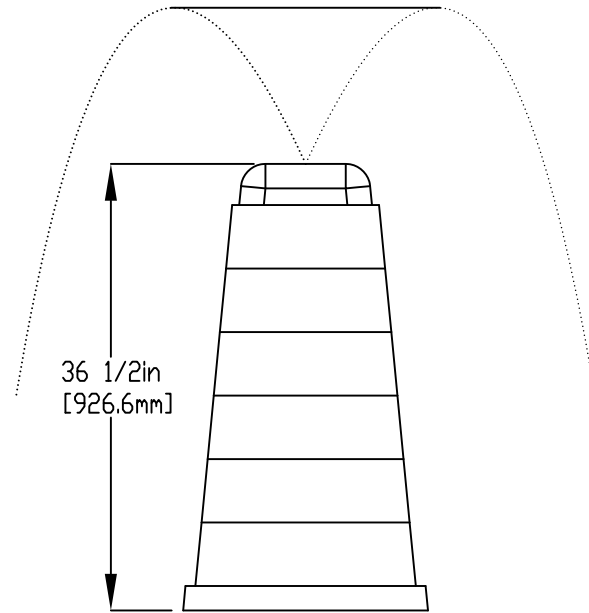
NOTES:

- (1) PURGE ALL WATER SUPPLY LINES TO REMOVE SOLIDS PRIOR TO TOY INSTALLATION.
- (2) PROVIDE ELECTRICAL BOND WITH POOL REBAR.
- (3) INSTALL ALL WATER TOYS PLUMB AND LEVEL.
- (4) PROVIDE STRAINER UPSTREAM OF TOY WITH MAX  $\frac{1}{32}$ " (0.8mm) PERFORATIONS.



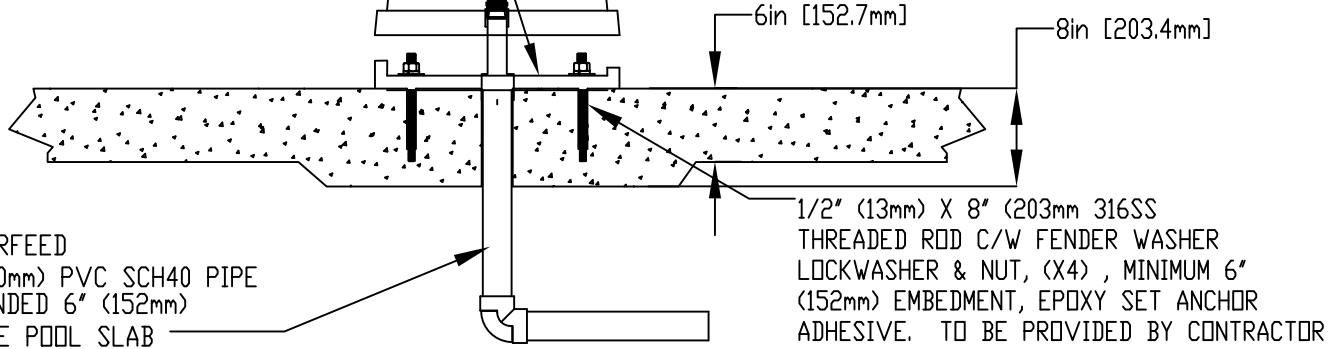
MOUNTING PLATE DETAIL

1. BOLT INSERT TO SLAB
2. MAKE PLUMBING CONNECTIONS
3. LOWER TOY AND BOLT TO INSERT



2" (50mm) COUPLING  
 2" (50mm) TO 1" (25mm) REDUCER  
 1" (25mm) HOSEBARB & SS CLAMP  
 TO BE PROVIDED BY CONTRACTOR

1" (25mm) FLEX HOSE  
 PROVIDED BY EMPEX



WATERFEED  
 2" (50mm) PVC SCH40 PIPE  
 EXTENDED 6" (152mm)  
 ABOVE POOL SLAB

1/2" (13mm) X 8" (203mm) 316SS  
 THREADED ROD C/W FENDER WASHER  
 LOCKWASHER & NUT, (X4), MINIMUM 6"  
 (152mm) EMBEDMENT, EPOXY SET ANCHOR  
 ADHESIVE. TO BE PROVIDED BY CONTRACTOR

Notes: Overall dimensions of toys are approximate.  
 Approximate Weight: 12lbs / 5.5kgs

© EMPEX WATERTOYS



WATER SUPPLY

30 gpm @ 25 psi  
 1.89L/S @17.5m

AQUAPYLON

ABU 106

18/02/2022

SCALE:

Sheet 1 of 1

1

2

3

4