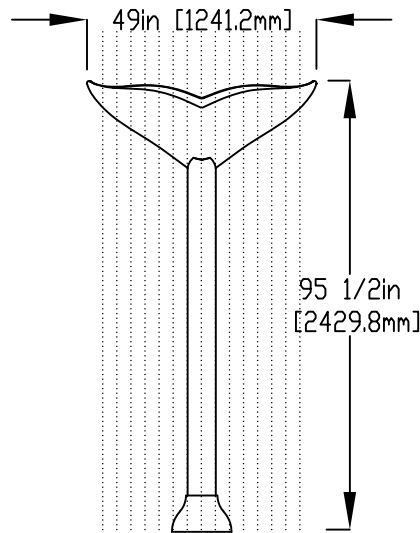
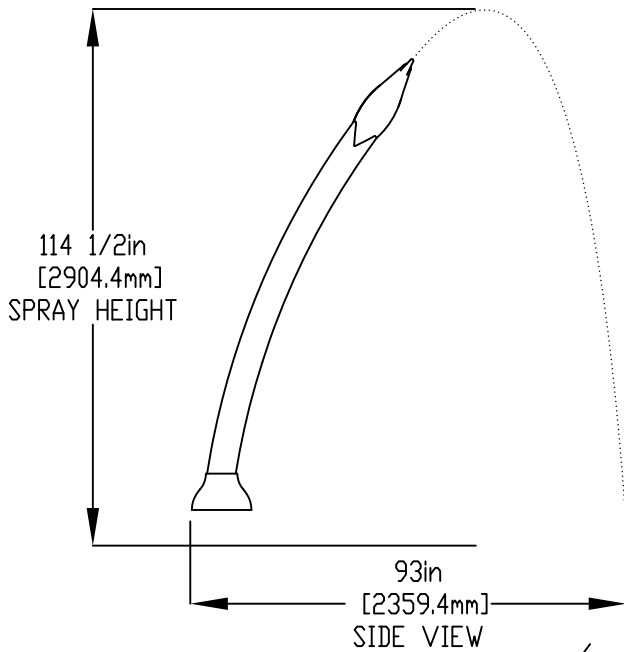
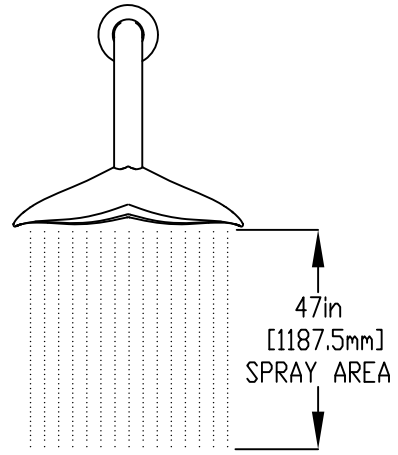
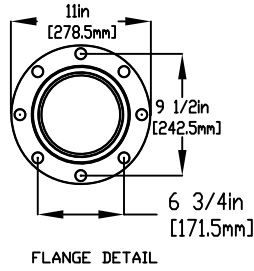


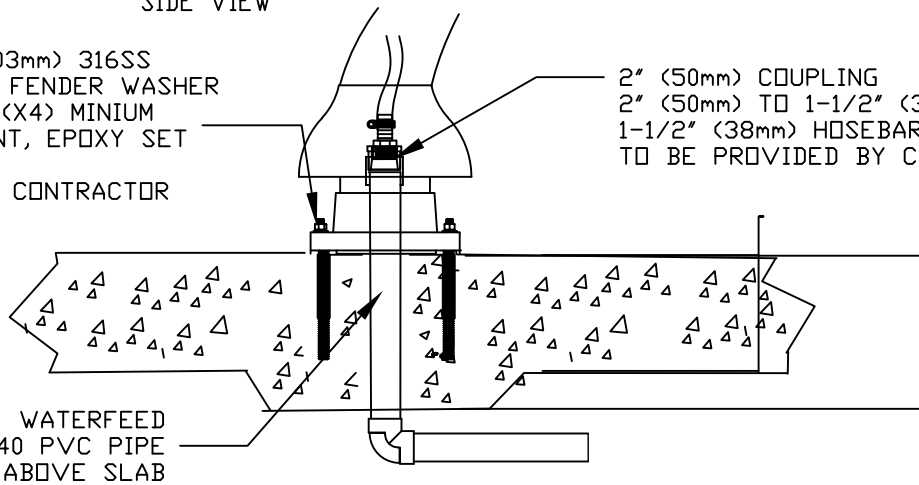
NOTES:

- (1) PURGE ALL WATER SUPPLY LINES TO REMOVE SOLIDS PRIOR TO TOY INSTALLATION.
- (2) PROVIDE ELECTRICAL BOND WITH POOL REBAR.
- (3) INSTALL ALL WATER TOYS PLUMB AND LEVEL.
- (4) PROVIDE STRAINER UPSTREAM OF TOY WITH MAX 1/32" (0.8mm) PERFORATIONS.



1/2" (13mm) x 8" (203mm) 316SS  
 THREADED ROD, C/W FENDER WASHER  
 LOCKWASHER & NUT (X4) MINIMUM  
 6" (152mm) EMBEDMENT, EPOXY SET  
 ANCHOR ADHESIVE  
 TO BE PROVIDED BY CONTRACTOR

2" (50mm) COUPLING  
 2" (50mm) TO 1-1/2" (38mm) REDUCER  
 1-1/2" (38mm) HOSEBARB W/SS CLAMP  
 TO BE PROVIDED BY CONTRACTOR



Notes: Overall dimensions of toys are approximate.

© EMPEX WATERTOYS

WATER SUPPLY

50 gpm @ 25 psi  
 3.15" L/S @17.5m

AQUATAIL

M507

4/5/2023

SCALE:

Sheet  
 1 of 1