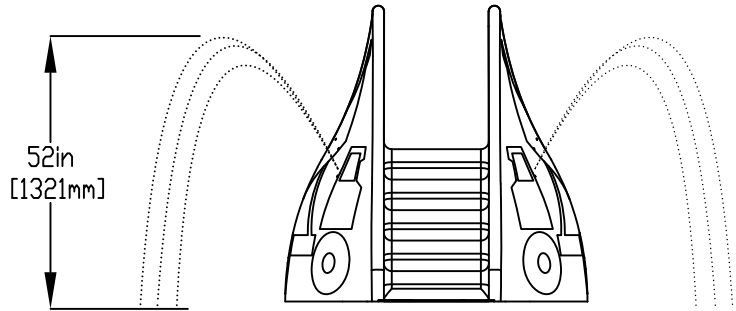
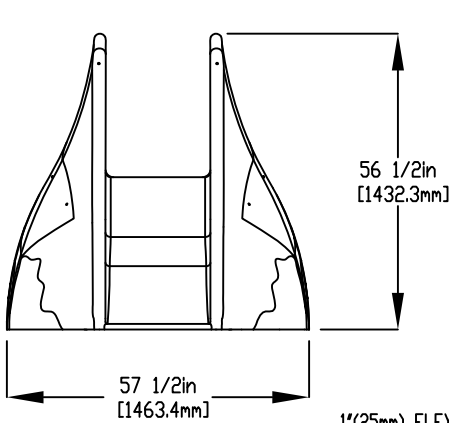
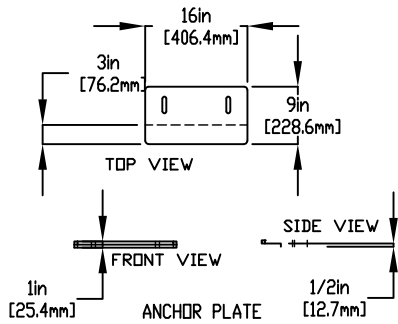
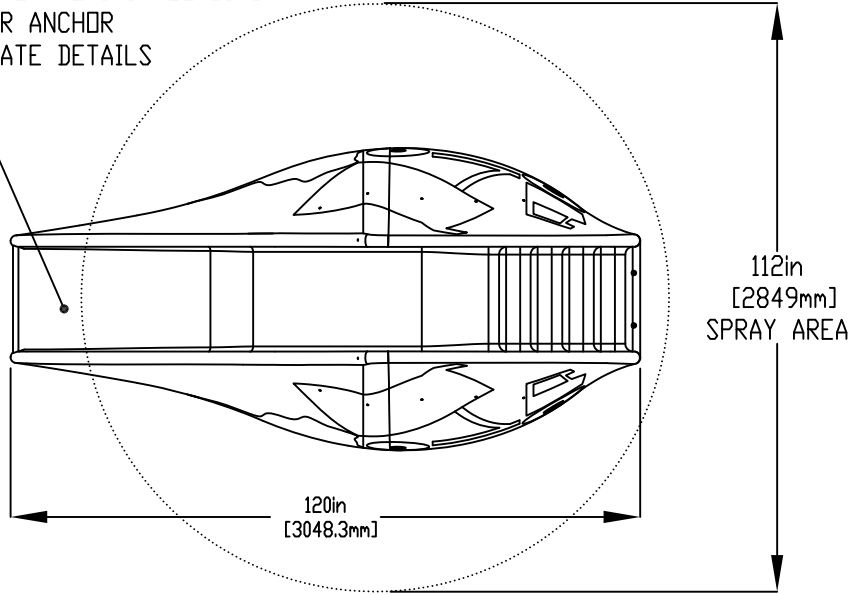


NOTES:

- (1) PURGE ALL WATER SUPPLY LINES TO REMOVE SOLIDS PRIOR TO TOY INSTALLATION.
- (2) PROVIDE ELECTRICAL BOND WITH POOL REBAR.
- (3) INSTALL ALL WATER TOYS PLUMB AND LEVEL.
- (4) PROVIDE STRAINER UPSTREAM OF TOY WITH MAX 1/32" (0.8mm) PERFORATIONS.

REFER TO INSTALL DIAGRAM FOR ANCHOR PLATE DETAILS



1/2" (13mm) X 8" (203mm) 316SS THREADED ROD C/W FENDER WASHER, LOCK WASHER & NUT (x2) MINIMUM 6" (152mm) EMBEDMENT, EPOXY SET ANCHOR ADHESIVE TO BE PROVIDED BY CONTRACTOR

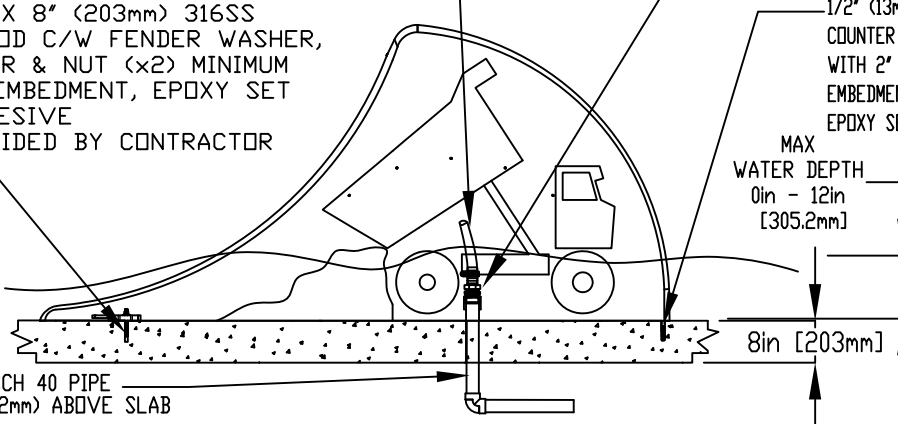
1" (25mm) FLEX HOSE PROVIDED BY EMPEX

2" (50mm) COUPLING  
2" (50mm) - 1" (25mm) REDUCER  
1" (25mm) HOSEBARB & SS CLAMP TO BE PROVIDED BY CONTRACTOR

1/2" (13mm) X 1-1/2" (38mm) 316SS COUNTER SINK SCREWS COMPLETE WITH 2" FEMALE ANCHOR, 2" (38mm) EMBEDMENT (PROVIDED BY EMPEX), EPOXY SET ANCHOR ADHESIVE

MAX WATER DEPTH  
0in - 12in  
[305.2mm]

WATERFEED  
2" (50mm) PVC SCH 40 PIPE EXTENDED 6" (152mm) ABOVE SLAB



Notes: Overall dimensions of toys are approximate.  
Approximate Weight: 156lbs / 70.4kgs

© EMPEX WATERTOYS



WATER SUPPLY

30 gpm @ 25 psi  
1.89L/S @17.5m

AQUAWAVE

ABU450

01/04/2020

SCALE:

Sheet  
1 of 1