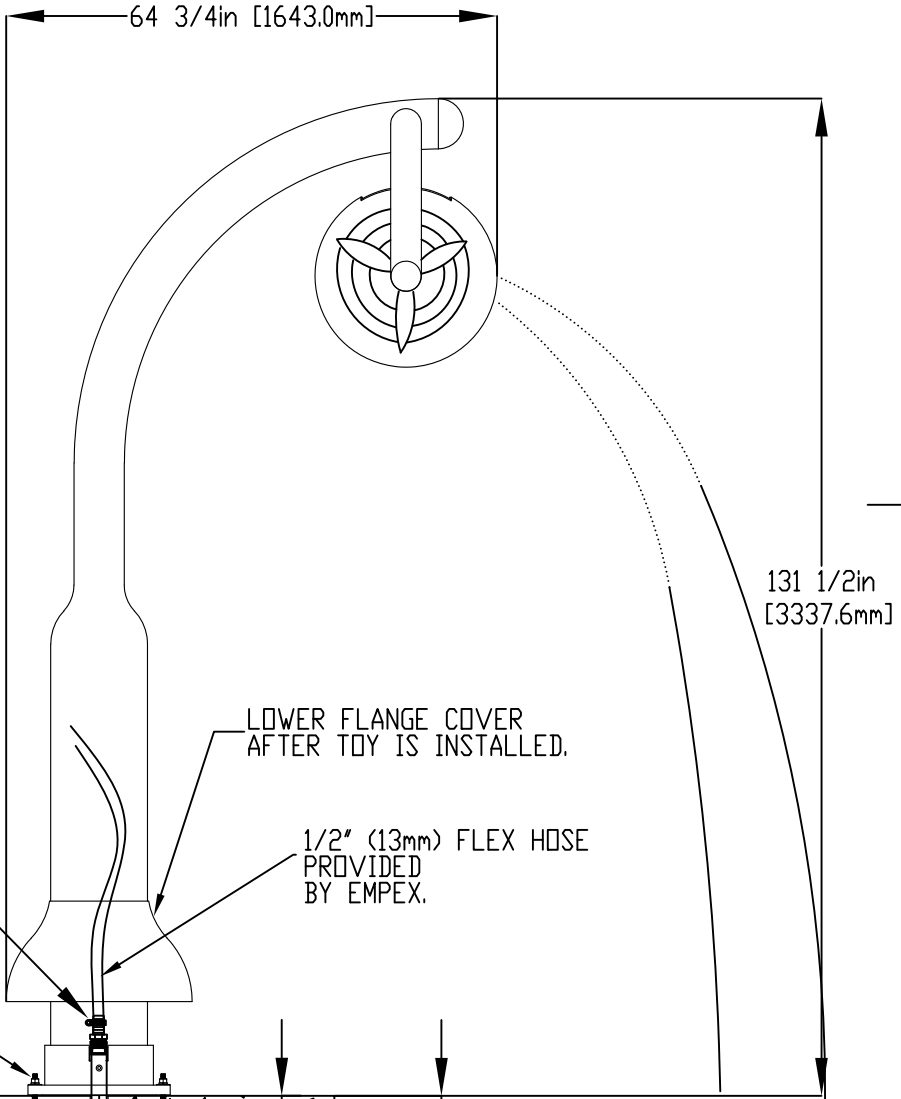
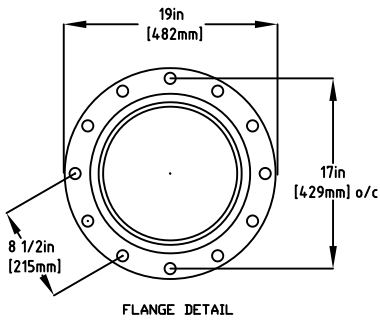
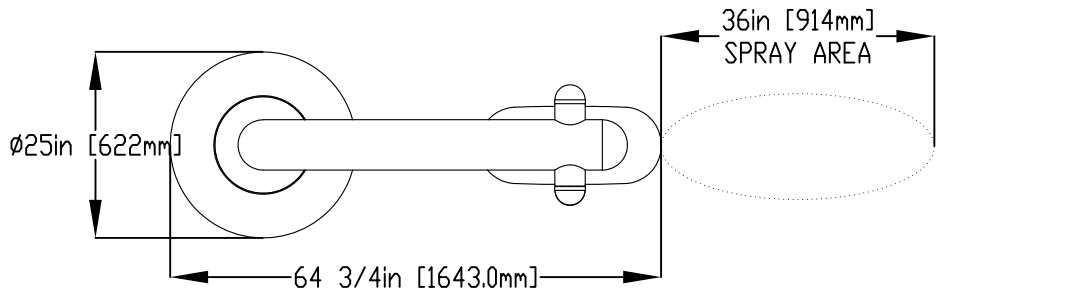


**NOTES:**

- (1) PURGE ALL WATER SUPPLY LINES TO REMOVE SOLIDS PRIOR TO TOY INSTALLATION.
- (2) PROVIDE ELECTRICAL BOND WITH POOL REBAR.
- (3) INSTALL ALL WATER TOYS PLUMB AND LEVEL.
- (4) PROVIDE STRAINER UPSTREAM OF TOY WITH MAX 1/32" (0.8mm) PERFORATIONS.



2" (50mm) COUPLING  
 2" (50mm)-1/2" (13mm) REDUCER  
 1/2" (50mm) HOSEBARB W/SS CLAMP  
 TO BE PROVIDED BY CONTRACTOR

5/8" (16mm) X 9" (230mm) 316SS  
 THREADED ROD C/W FENDER WASHER,  
 LOCK WASHER & NUT (X6), MINIMUM  
 6" (152mm) EMBEDMENT, EPOXY SET  
 ANCHOR ADHESIVE  
 TO BE PROVIDED BY CONTRACTOR

WATERFEED  
 2" (50mm) SCH 40 PVC PIPE  
 EXTENDED 6" (152mm) ABOVE SLAB.

LOWER FLANGE COVER  
 AFTER TOY IS INSTALLED.

1/2" (13mm) FLEX HOSE  
 PROVIDED  
 BY EMPEX.



Notes: Overall dimensions of toys are approximate.  
 Approximate Weight: 178lbs / 80.9kgs

© EMPEX WATERTOYS

WATER SUPPLY  
 10 gpm @ 25 psi  
 0.63 L/S @ 17.5m

AQUADUNK

AE816

07/08/2020

SCALE:

Sheet  
 1 of 1