

1

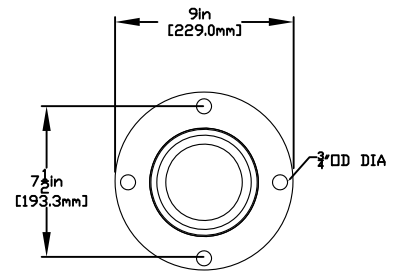
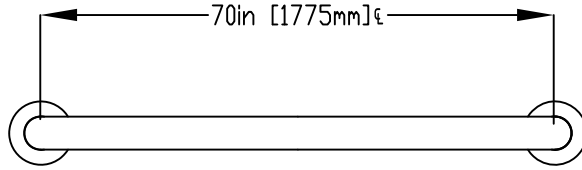
2

3

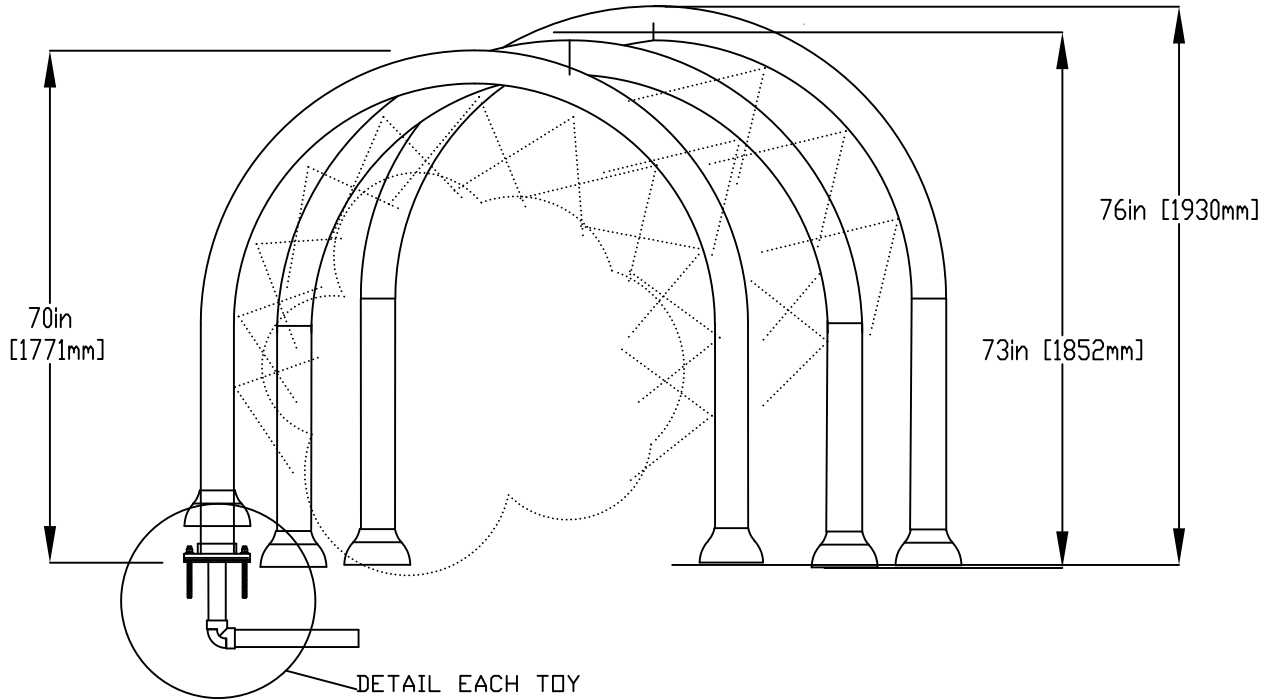
4

NOTES:

- (1) PURGE ALL WATER SUPPLY LINES TO REMOVE SOLIDS PRIOR TO TOY INSTALLATION.
- (2) PROVIDE ELECTRICAL BOND WITH POOL REBAR.
- (3) INSTALL ALL WATER TOYS PLUMB AND LEVEL.
- (4) PROVIDE STRAINER UPSTREAM OF TOY WITH MAX 1/32" (0.8mm) PERFORATIONS.



FRP FLANGE DETAIL

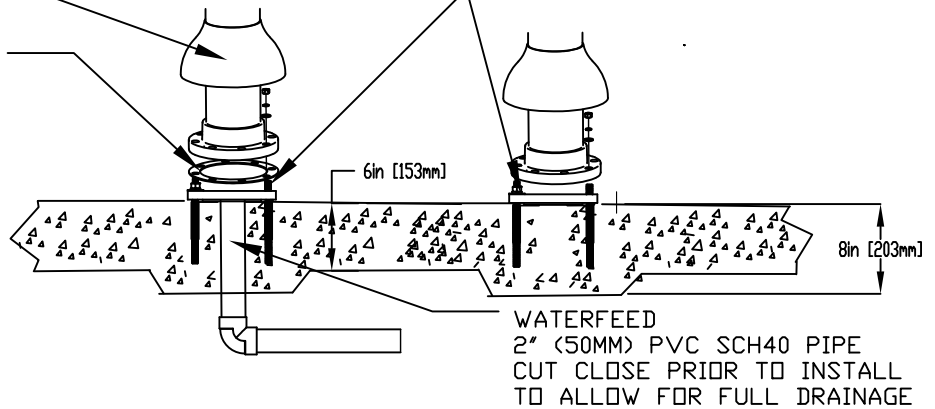


DETAIL EACH TOY

LOWER FLANGE COVERS AFTER TOY IS INSTALLED

ENSURE LEVEL & PLUMB
4" (101mm) X 1/8" (3mm) GASKET INSTALLED UNDER FLANGE TO BE PROVIDED BY EMPEX

1/2" (13mm) X 8" (203mm) 316SS THREADED ROD, C/W FENDER WASHER, LOCK WASHER & UT (X4) MINIMUM
6" (152mm) EMBEDMENT, EPOXY SET ANCHOR ADHESIVE
TO BE PROVIDED BY CONTRACTOR



WATERFEED
2" (50MM) PVC SCH40 PIPE
CUT CLOSE PRIOR TO INSTALL TO ALLOW FOR FULL DRAINAGE



Notes: Overall dimensions of toys are approximate.
Approximate Weight: 401lbs / 182.3kgs

© EMPEX WATERTOYS

WATER SUPPLY (PER UNIT)
30gpm @ 25 psi
1.89L/S @17.5m

AQUABOW MINI TRIO

T809-3

25/04/2024

SCALE:

Sheet
1 of 1

1

2

3

4