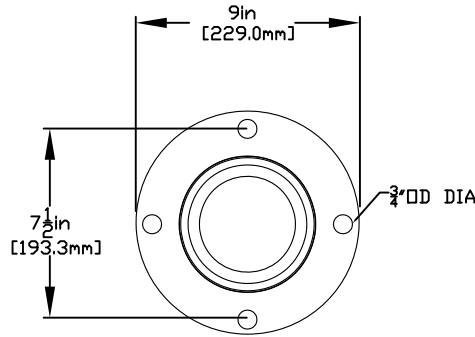
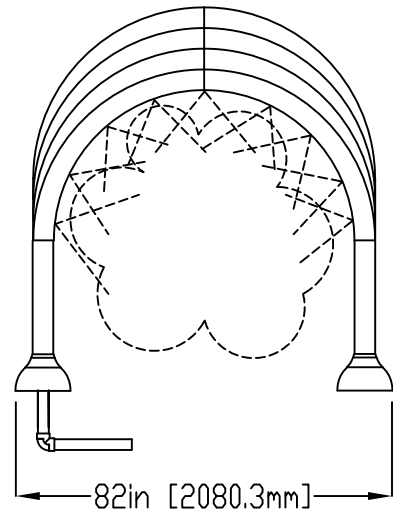
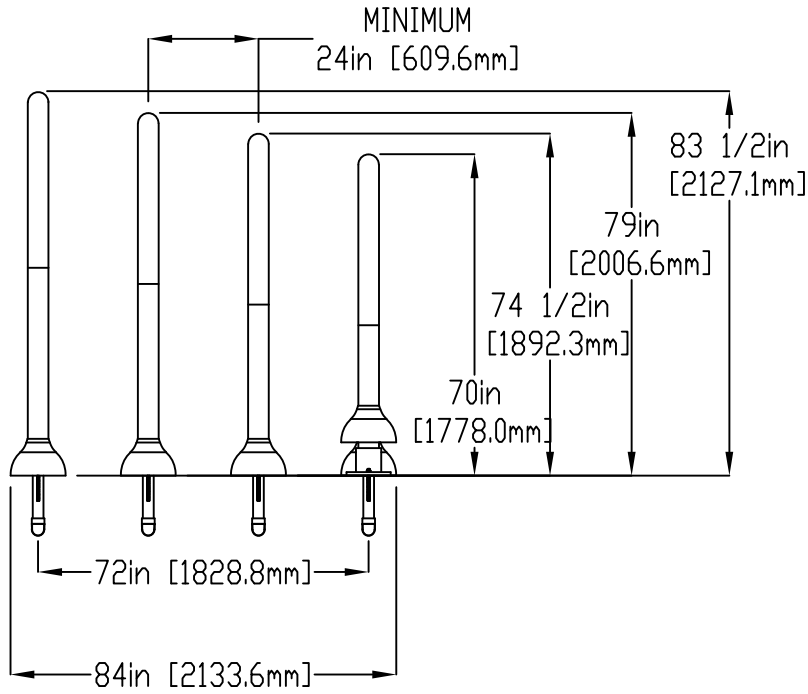


NOTES:

- (1) PURGE ALL WATER SUPPLY LINES TO REMOVE SOLIDS PRIOR TO TOY INSTALLATION.
- (2) PROVIDE ELECTRICAL BOND WITH POOL REBAR.
- (3) INSTALL ALL WATER TOYS PLUMB AND LEVEL.
- (4) PROVIDE STRAINER UPSTREAM OF TOY WITH MAX 1/32" (0.8mm) PERFORATIONS.



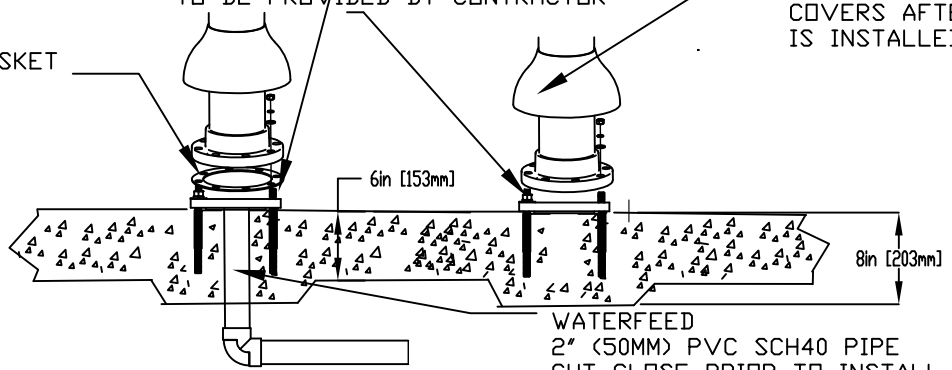
FLANGE DETAIL



1/2" (13mm) X 8" (203mm) 316SS
 THREADED ROD, C/W FENDER WASHER,
 LOCK WASHER & UT (X4) MINIMUM
 6" (152mm) EMBEDMENT, EPOXY SET
 ANCHOR ADHESIVE
 TO BE PROVIDED BY CONTRACTOR

LOWER FLANGE
 COVERS AFTER TOY
 IS INSTALLED

ENSURE LEVEL & PLUMB
 4" (101mm) X 1/8" (3mm) GASKET
 INSTALLED UNDER FLANGE
 TO BE PROVIDED BY EMPEX



WATERFEED
 2" (50MM) PVC SCH40 PIPE
 CUT CLOSE PRIOR TO INSTALL
 TO ALLOW FOR FULL DRAINAGE

Notes: Overall dimensions of toys are approximate.
 Approximate Weight: 554lbs / 252kgs

© EMPEX WATERTOYS



WATER SUPPLY (PER UNIT)
 30gpm @ 25 psi
 1.89L/S @17.5m

AQUABOW MINI QUAD

T809-4 MINI

3/9/2023

SCALE:

Sheet
 1 of 1