

1

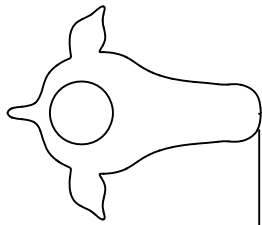
2

3

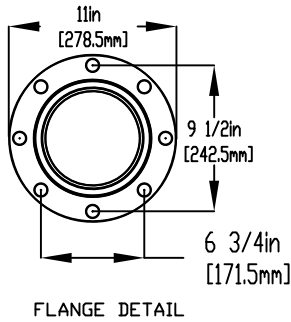
4

NOTES:

- (1) PURGE ALL WATER SUPPLY LINES TO REMOVE SOLIDS PRIOR TO TOY INSTALLATION.
- (2) PROVIDE ELECTRICAL BOND WITH POOL REBAR.
- (3) INSTALL ALL WATER TOYS PLUMB AND LEVEL.
- (4) PROVIDE STRAINER UPSTREAM OF TOY WITH MAX 1/32" (0.8mm) PERFORATIONS.



120in [3048mm]
 SPRAY DISTANCE
 NTS



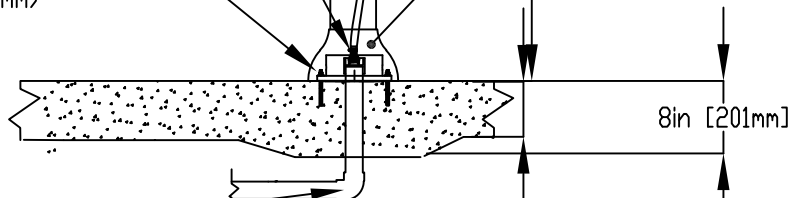
123 1/2in
 [3142.3mm]

2" (50mm) COUPLING
 2" (50mm)-3/8" (9.5mm) REDUCER
 3/8" (9.5mm) HOSEBARB C/W SS CLAMP
 TO BE PROVIDED BY CONTRACTOR

3/8" (9.5mm)
 FLEX HOSE
 PROVIDED BY EMPEX

STAINLESS STEEL GRADE 316
 5/8" (16mm)
 THREADED ROD,
 FENDER WASHER,
 LOCK WASHER & NUT.
 SUGGESTED THREADED ROD LENGTH
 7" (180mm) WITH MIN 4" (100mm)
 EMBEDMENT.

LOWER FLANGE COVER
 AFTER TOY IS INSTALLED



8in [201mm]

WATERFEED
 2" (50mm) DVC SCHDV 40 PIPE
 EXTEND 6" (152MM) ABOVE SLAB

6in [152mm]

F



Notes: Overall dimensions of toys are approximate.

© EMPEX WATERTOYS

WATER SUPPLY

15 gpm @ 25 psi
 1 L/S @ 17.5m

KIDSPUMPZ WESTERN (COLUMN ONLY)

AW978

20/03/2023

SCALE:

Sheet
 1 of 1

1

2

3

4

F