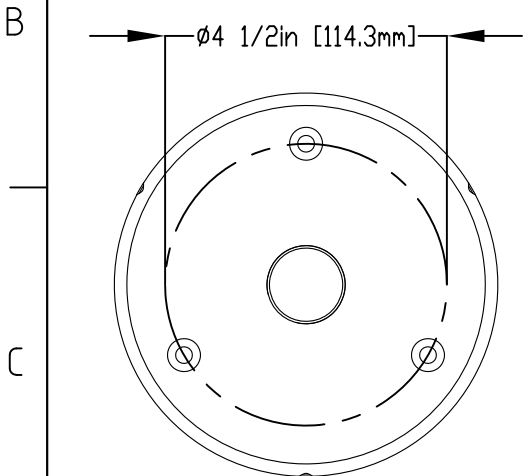
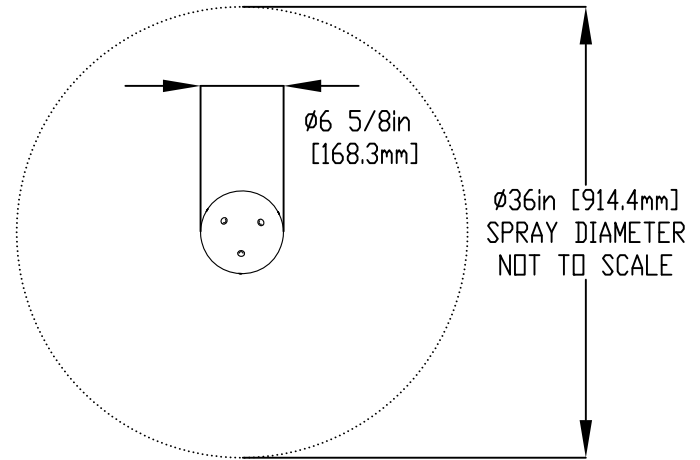
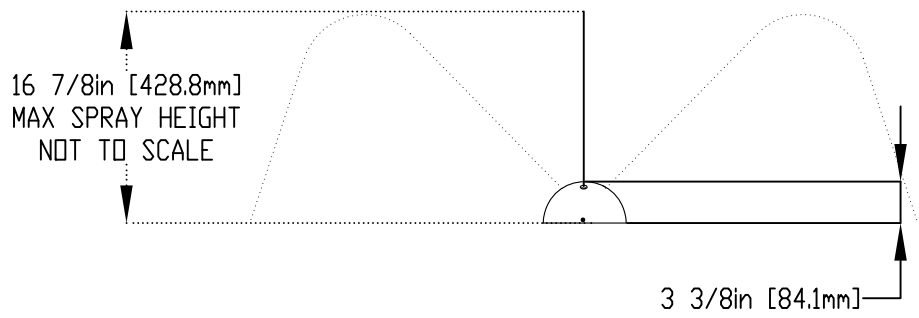


**NOTES:**

- (1) PURGE ALL WATER SUPPLY LINES TO REMOVE SOLIDS PRIOR TO TOY INSTALLATION.
- (2) PROVIDE ELECTRICAL BOND WITH POOL REBAR.
- (3) INSTALL ALL WATER TOYS PLUMB AND LEVEL.
- (4) PROVIDE STRAINER UPSTREAM OF TOY WITH MAX 1/32" (0.8mm) PERFORATIONS.

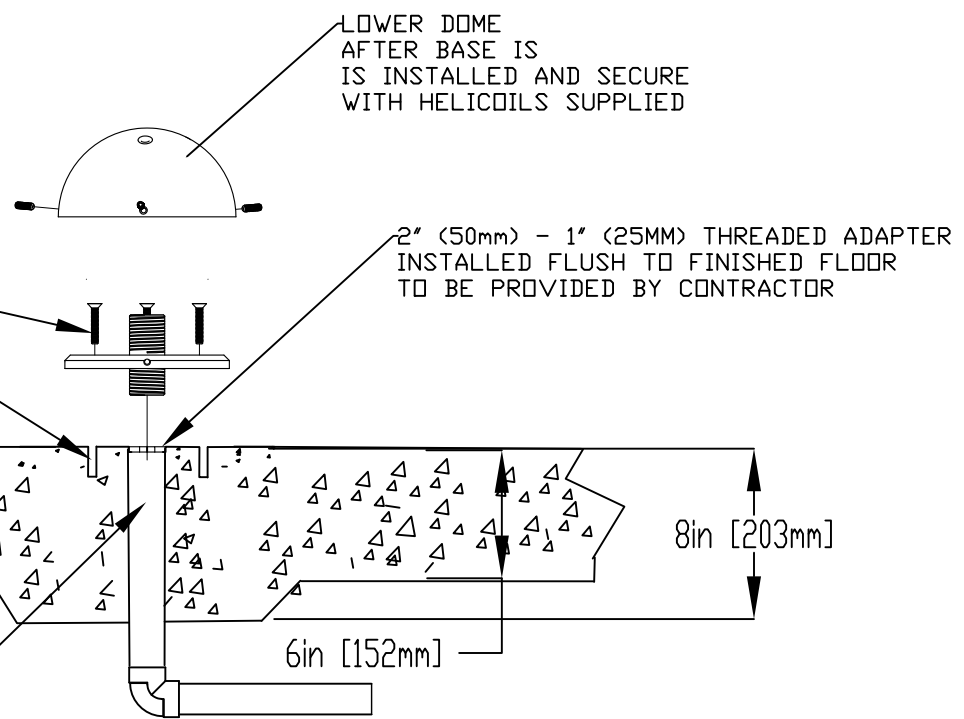


FLANGE DETAIL

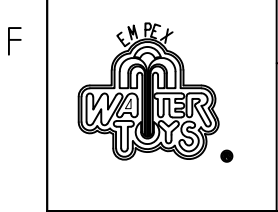


THREAD BASE INTO ADAPTER UNTIL FLUSH WITH FLOOR

INSTALL 1/4" (6MM) X 4" LONG CONTERSUNK BOLT AND FEMALE ANCHORS (X3) TO BE PROVIDED BY CONTRACTOR



WATERFEED 2" (50MM) PVC SCH40 PIPE CUT CLOSE PRIOR TO INSTALL TO ALLOW FOR FULL DRAINAGE



Notes: Overall dimensions of toys are approximate.  
Approximate Weight: 2lbs / 0.9kgs

© EMPEX WATERTOYS

WATER SUPPLY  
13.5 gpm @ 25 psi  
0.85L/S @17.5m

AQUABEAN

T262

16/04/2024

SCALE:

Sheet 1 of 1