

1

2

3

4

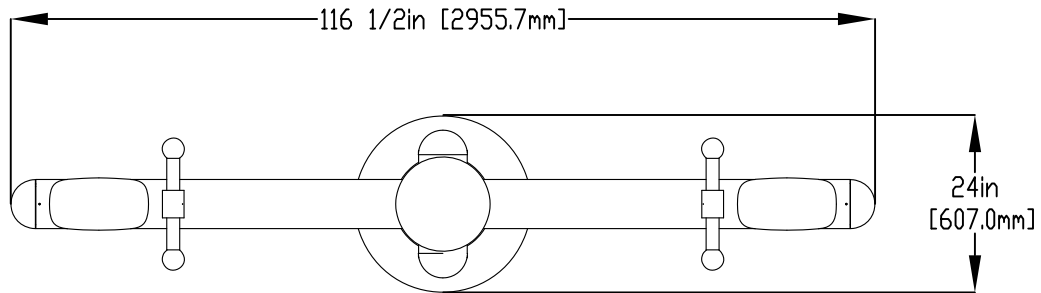
**NOTES:**

(1) PURGE ALL WATER SUPPLY LINES TO REMOVE SOLIDS PRIOR TO TOY INSTALLATION.

(2) PROVIDE ELECTRICAL BOND WITH POOL REBAR.

(3) INSTALL ALL WATER TOYS PLUMB AND LEVEL.

(4) PROVIDE STRAINER UPSTREAM OF TOY WITH MAX 1/32" (0.8mm) PERFORATIONS.



A

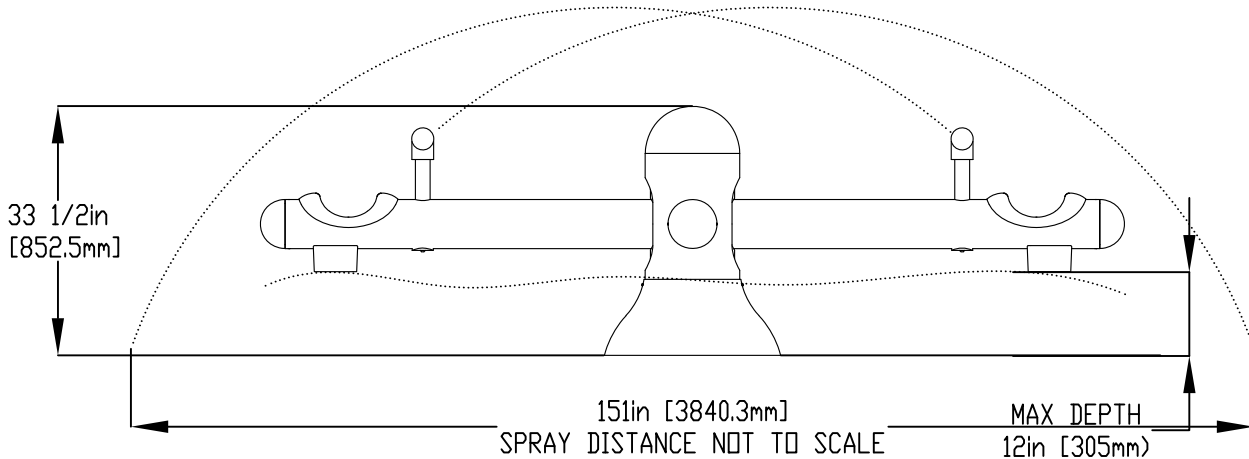
A

B

B

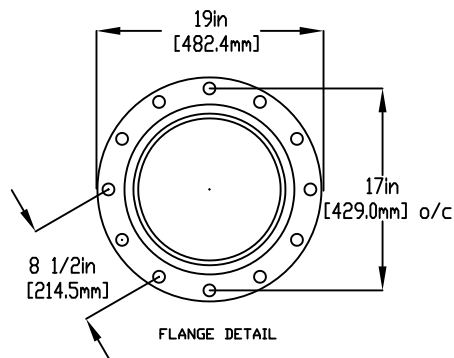
C

C



D

D

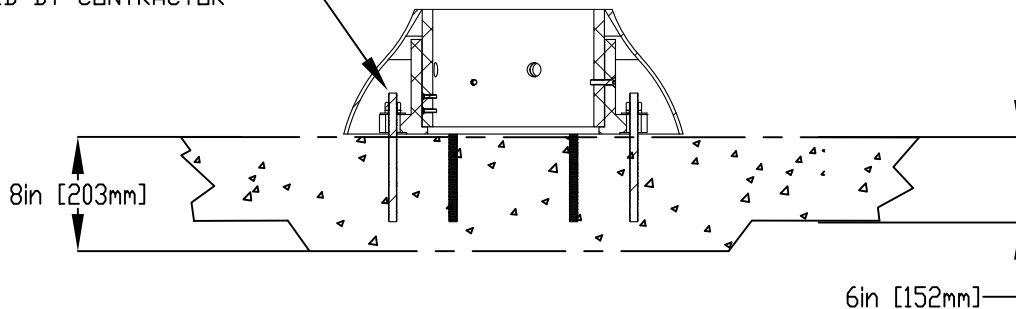


1/2" (13mm) X 8" (203mm) 316SS THREADED ROD, C/W FENDER WASHER, LOCK WASHER & NUT (X6) MINIMUM 6" (152mm) EMBEDMENT, EPOXY SET ANCHOR ADHESIVE TO BE PROVIDED BY CONTRACTOR

FLANGE DETAIL

E

E



F

F



Notes: Overall dimensions of toys are approximate. Approximate Weight: 150lbs (68.2kgs)

© EMPEX WATERTOYS

WATER SUPPLY  
NO EXTERNAL SUPPLY

WATERTOTTER

T311

17/04/2024

SCALE:

Sheet  
1 of 1

1

2

3

4