

1

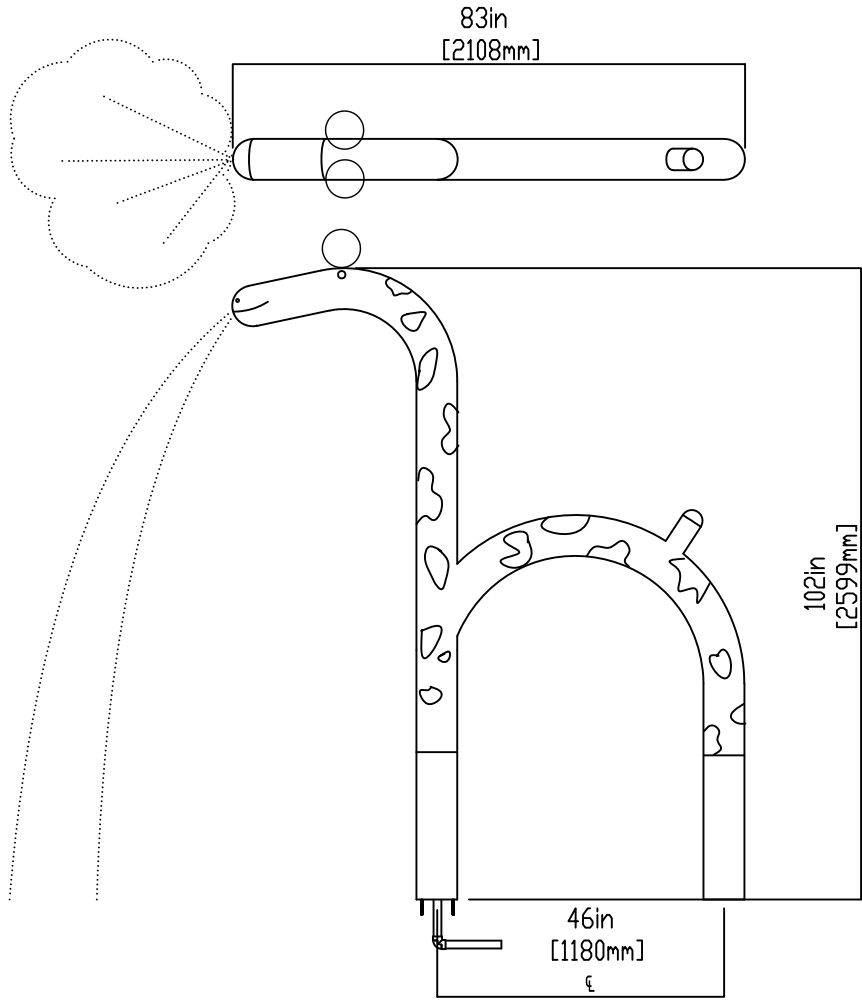
2

3

4

NOTES:

- (1) PURGE ALL WATER SUPPLY LINES TO REMOVE SOLIDS PRIOR TO TOY INSTALLATION.
- (2) PROVIDE ELECTRICAL BOND WITH POOL REBAR.
- (3) INSTALL ALL WATER TOYS PLUMB AND LEVEL.
- (4) PROVIDE STRAINER UPSTREAM OF TOY WITH MAX 1/32" (0.8mm) PERFORATIONS.



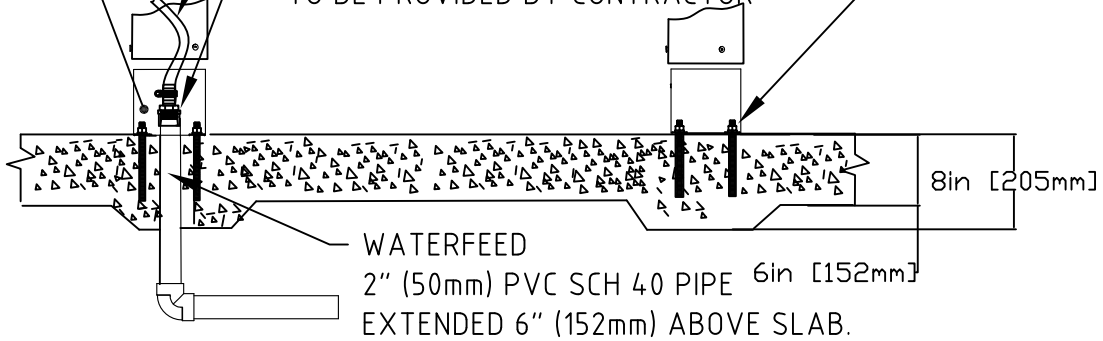
- 1. Bolt insert sleeves
- 2. Make Plumbing connection
- 3. Lower Toy & Bolt to Inserts

2" (50mm) FLEX HOSE PROVIDED BY EMPEX

2" (50mm) COUPLING

2" (50mm) HOSE BARB W/SS CLAMP TO BE PROVIDED BY CONTRACTOR

1/2" (13mm) X 8" (203mm) 316SS THREADED ROD, C/W FENDER WASHER, LOCK WASHER & NUT (X6) MINIMUM 6" (152mm) EMBEDMENT, EPOXY SET ANCHOR ADHESIVE TO BE PROVIDED BY CONTRACTOR (2SETS)



WATERFEED
2" (50mm) PVC SCH 40 PIPE 6in [152mm] EXTENDED 6" (152mm) ABOVE SLAB.

Notes: Overall dimensions of toys are approximate.

© EMPEX WATERTOYS



WATER SUPPLY
15 gpm @ 25 psi
.95 L/S @17.5m

AQUARAFF Z208

Z208

10/04/2024

SCALE:

Sheet 1 of 1

1

2

3

4