

1

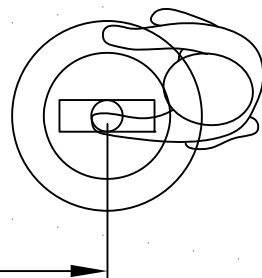
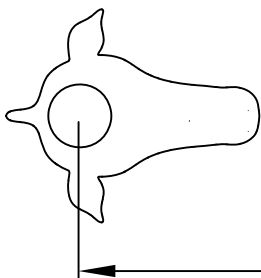
2

3

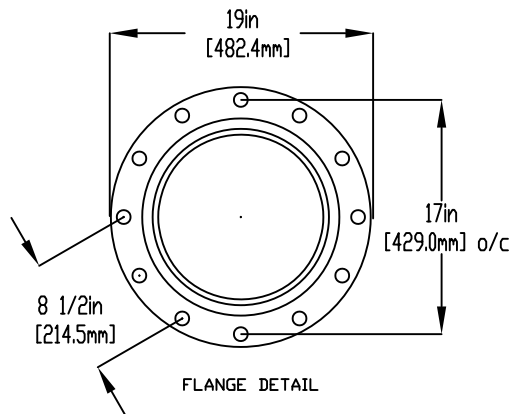
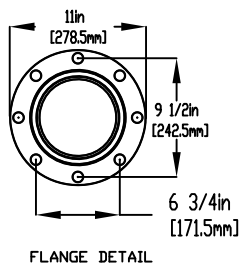
4

NOTES:

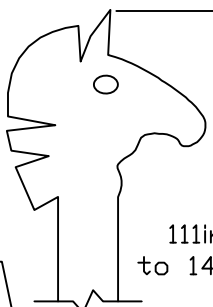
- (1) PURGE ALL WATER SUPPLY LINES TO REMOVE SOLIDS PRIOR TO TOY INSTALLATION.
- (2) PROVIDE ELECTRICAL BOND WITH POOL REBAR.
- (3) INSTALL ALL WATER TOYS PLUMB AND LEVEL.
- (4) PROVIDE STRAINER UPSTREAM OF TOY WITH MAX 1/32" (0.8mm) PERFORATIONS.



120in [3048mm]
to 144in [3657.6mm]



LOWER FLANGE COVERS AFTER TOY IS INSTALLED [TYP X2]



111in (2819.4MM)
to 141IN [3581.4mm]

PIPE CUT
6in [152mm]
ABOVE WATER
LEVEL
[TYP X2]

5/8" (16mm) X 9" (229mm) 316 SS
THREADED ROD, C/W FENDER WASHER
LOCK WASHER & NUT (X6) MINIMUM
6" EMBEDMENT, EPOXY SET
ANCHOR ADHESIVE (EACH LEG)
TO BE PROVIDED BY CONTRACTOR

1/2" (13mm) X 8" (203mm) 316SS
THREADED ROD, C/W FENDER WASHER,
LOCK WASHER & NUT (X6) MINIMUM
6" (152mm) EMBEDMENT, EPOXY SET
ANCHOR ADHESIVE
TO BE PROVIDED BY CONTRACTOR

6in [152mm]
TO 12in [305mm]
MAX DEPTH

8in [203.2mm]
THICKNESS

2in (50mm) SCH 40 PVC
CONDUIT

3/8in (9.5mm)
POLYURETHANE TUBING
PROVIDED BY EMPEX

Notes: Overall dimensions of toys are approximate.
Approximate Weight A: TBD

© EMPEX WATERTOYS



WATER SUPPLY
N/A

KIDSPUMPZ PUMP ACTUATED

Z977

01/05/2020

SCALE:

Sheet
1 of 1

1

2

3

4