

1

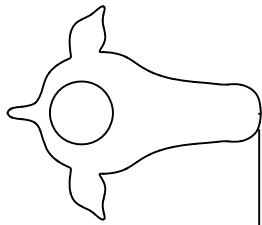
2

3

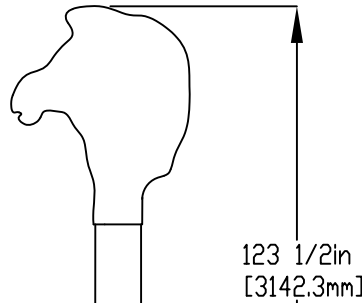
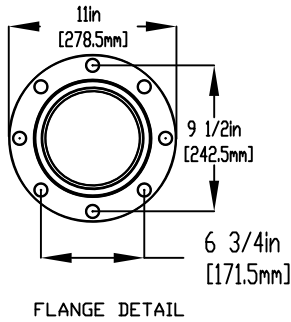
4

NOTES:

- (1) PURGE ALL WATER SUPPLY LINES TO REMOVE SOLIDS PRIOR TO TOY INSTALLATION.
- (2) PROVIDE ELECTRICAL BOND WITH POOL REBAR.
- (3) INSTALL ALL WATER TOYS PLUMB AND LEVEL.
- (4) PROVIDE STRAINER UPSTREAM OF TOY WITH MAX 1/32" (0.8mm) PERFORATIONS.



120in [3048mm]
 SPRAY DISTANCE
 NTS

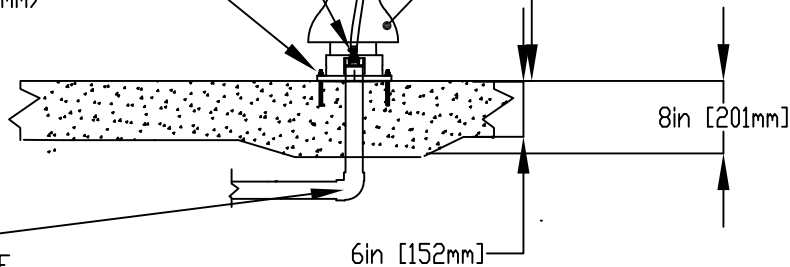


2" (50mm) COUPLING
 2" (50mm)-3/8" (9.5mm) REDUCER
 3/8" (9.5mm) HOSEBARB C/W SS CLAMP
 TO BE PROVIDED BY CONTRACTOR

3/8" (9.5mm)
 FLEX HOSE
 PROVIDED BY EMPEX

STAINLESS STEEL GRADE 316
 5/8" (16mm)
 THREADED ROD,
 FENDER WASHER,
 LOCK WASHER & NUT.
 SUGGESTED THREADED ROD LENGTH
 7" (180mm) WITH MIN 4" (100mm)
 EMBEDMENT.

LOWER FLANGE COVER
 AFTER TOY IS INSTALLED



WATERFEED
 2" (50mm) DVC SCHDV 40 PIPE
 EXTEND 6" (152MM) ABOVE SLAB

Notes: Overall dimensions of toys are approximate.

© EMPEX WATERTOYS



WATER SUPPLY

15 gpm @ 25 psi
 1 L/S @ 17.5m

KIDSPUMPZ CONSTANT FLOW

Z978

10/04/2024

SCALE:

Sheet
 1 of 1

1

2

3

4