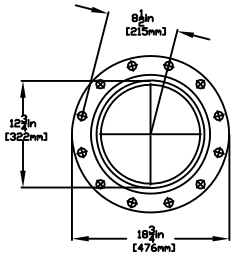
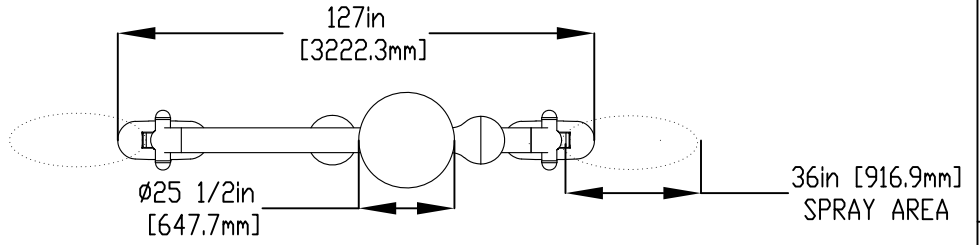


NOTES:

- (1) PURGE ALL WATER SUPPLY LINES TO REMOVE SOLIDS PRIOR TO TOY INSTALLATION.
- (2) PROVIDE ELECTRICAL BOND WITH POOL REBAR.
- (3) INSTALL ALL WATER TOYS PLUMB AND LEVEL.
- (4) PROVIDE STRAINER UPSTREAM OF TOY WITH MAX 1/32" (0.8mm) PERFORATIONS.

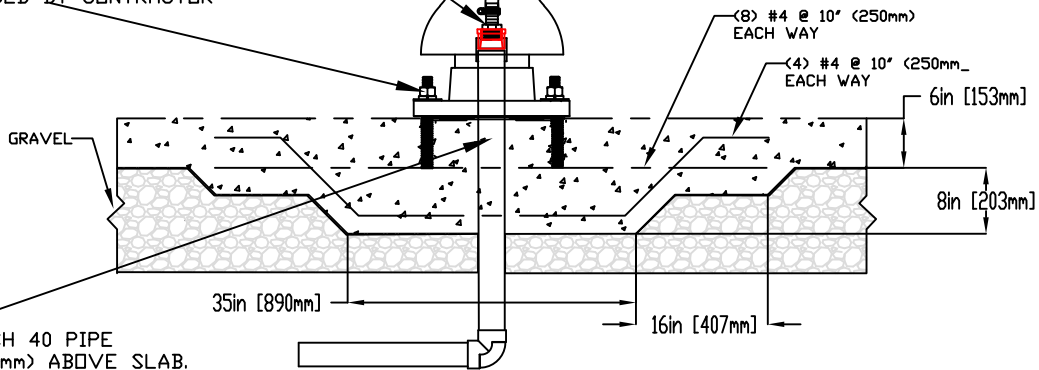


FLANGE DETAIL

2" (50mm) COUPLING
 2" (50mm) TO 1" (25mm) REDUCER
 1" (25mm) HOSE BARB W/SS CLAMP
 TO BE PROVIDED BY CONTRACTOR

1" (25mm) FLEX HOSE
 PROVIDED BY EMPEX

5/8" (16mm) X 9" (229mm) 316 SS
 THREADED ROD, C/W FENDER WASHER
 LOCK WASHER & NUT (X6) MINIMUM
 6" EMBEDMENT, EPOXY SET
 ANCHOR ADHESIVE (EACH LEG)
 TO BE PROVIDED BY CONTRACTOR



WATERFEED
 2" (50mm) PVC SCH 40 PIPE
 EXTENDED 6" (152mm) ABOVE SLAB.

Notes: Overall dimensions of toys are approximate.

© EMPEX WATERTOYS



WATER SUPPLY
 30 gpm @ 25 psi
 1.89L/S @17.5m

AQUADUO-180°

T643-180

06/06/2024

SCALE:

Sheet
 1 of 1